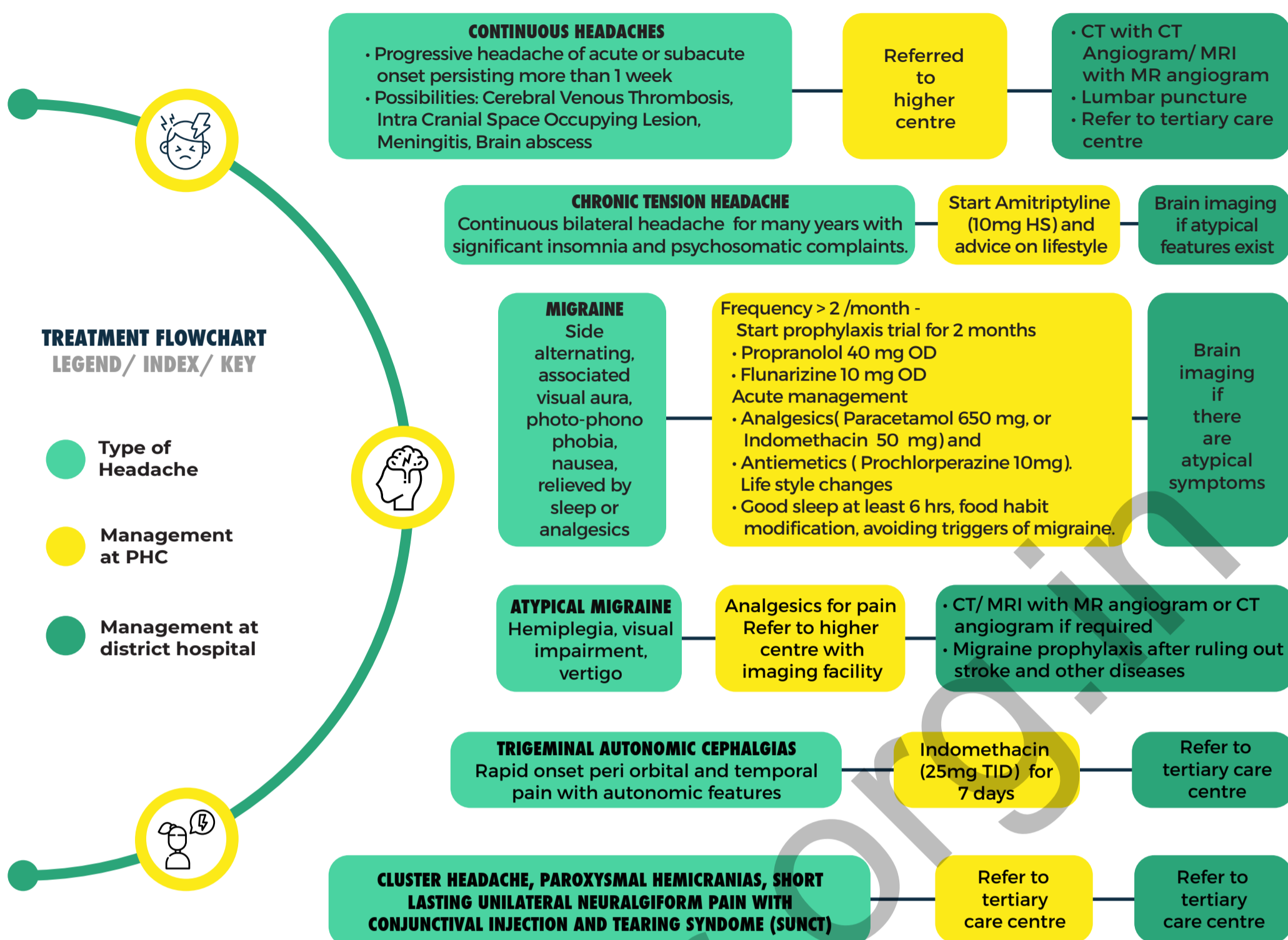




# Standard Treatment Workflow (STW) for the Management of HEADACHE

## ICD-10-G43-44



- RED FLAG SIGNS**
- First or worst headache of the patient's life
  - Focal neurologic signs (not typical aura)
  - Severe headache awakening from sleep

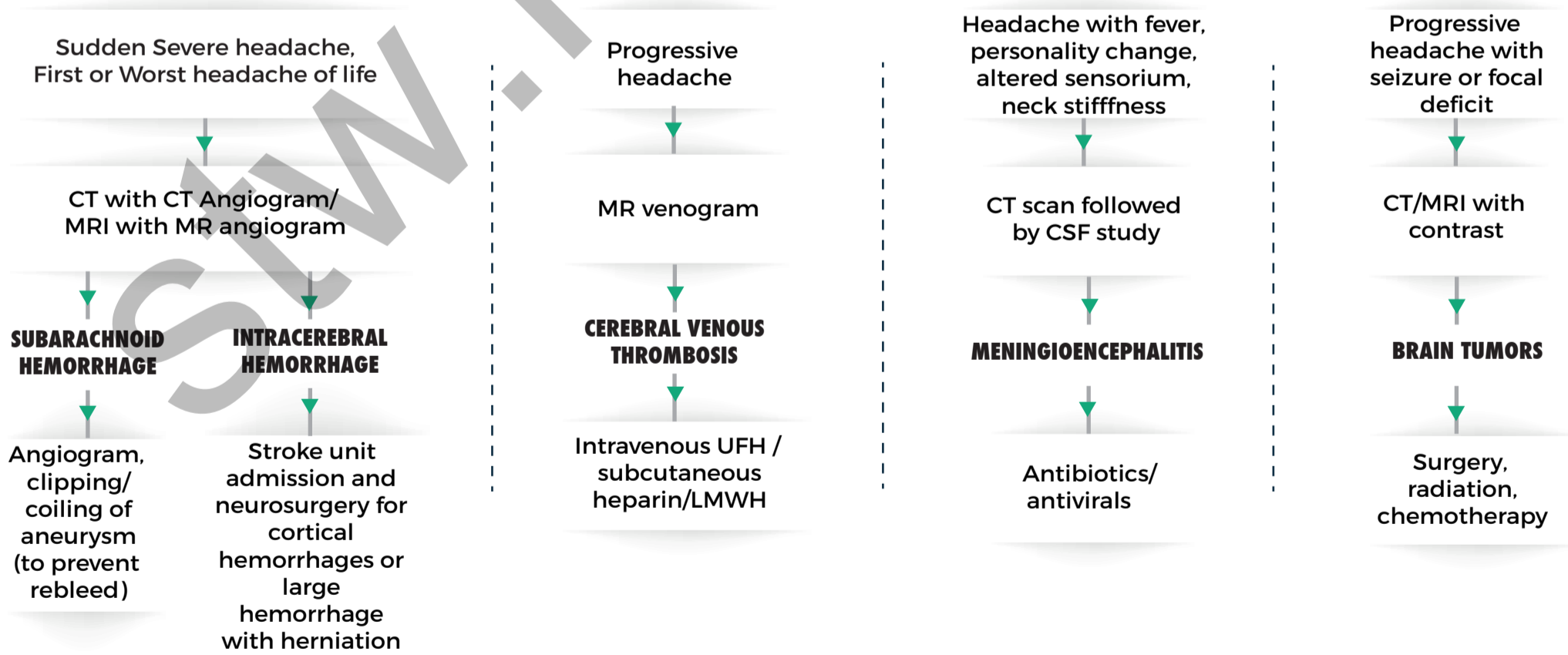
- Headache with fever, change in personality, mental status, level of consciousness
- Fever, neck stiffness or meningism
- New onset of severe headache in pregnancy or postpartum or while on hormone treatment

- Rapid onset with strenuous exercise
- Sudden onset (maximal intensity occurs within seconds to minutes, thunderclap headache)
- New headache type in a patient with malignancy or immunosuppression

**REASONS FOR REFERRAL**

- Non responding headaches
- Headaches with danger signs should be immediately referred and investigated for potentially dangerous conditions

**TREATMENT OF MAJOR CATASTROPHIC HEADACHES AT TERTIARY CENTRE**



**INDICATIONS FOR ADMISSION**

- Patient with unrelenting headache
- Immunosuppressed patients with continuous headache,
- First ever headache with worsening intensity,
- Progressive headache with other systemic disease
- Severe symptomatic primary headache disorders

**CRITERIA FOR DISCHARGE**

- Primary headache disorders- symptomatically improved severe episode of headache due to primary headache disorder can be discharged
- Secondary headache disorders- secondary headache disorders with essential work up, diagnosis and treatment as per individual case can be discharged

**FOLLOW UP OF HEADACHE PATIENTS**

CAUSES OF HEADACHE	TREATMENT OF HEADACHE
Intra cerebral hemorrhage	Good control of blood pressure
Seizures	Antiepileptic medications
Cerebral venous sinus thrombosis	Follow up of anticoagulation
Migraine	Give prophylaxis for adequate duration of time and taper after remission

**KEEP A HIGH THRESHOLD FOR INVASIVE PROCEDURES**

**REFERENCES**

- Hainer BL, Matheson EM. Approach to acute headache in adults. American family physician. 2013 May 15;87(10).
- <https://www.uptodate.com/contents/evaluation-of-headache-in-adults>

**ABBREVIATIONS**

CSF: Cerebrospinal Fluid, UFH: Unfractionated Heparin, LMWH: Low Molecular Weight Heparin